



**Midwest Corn-Fed 100 Days • No Meat & Bone Meal Fed  
Humane Harvest Facility • Product of USA • No Continental  
No Brahman • No Dairy • High Quality British Genetics**

**DiCarlo** FOOD SERVICE



## Tenderloin & Filet

### Choice Beef PSMO Tenderloin

#135705 2/6.5 lb. fresh



### Beef PSMO Tenderloin

#143499 12/6.5 lb. fresh

### Choice Beef Filet Mignon Center Cut Chain-off

6 oz. #135700 32/6 oz. fresh

6 oz. #135714 32/6 oz. frozen

8 oz. #135701 24/8 oz. fresh

8 oz. #135715 24/8 oz. frozen

10 oz. #135709 16/10 oz. fresh



### Choice Beef Metro Cut Filet Mignon 6 oz. 2 pack

#135708 32/6 oz. fresh



### Choice Beef Filet Tips

#146756 6/4 lb. frozen



## Striploins

### Upper 2/3 Choice Angus 1881 Hereford Beef Striploin Center Cut

#135711 15/12 oz. fresh

#135712 12/14 oz. fresh



### Upper 2/3 Choice Angus 1881 Hereford Beef Striploin 0x1

#140507 5/14 lb. avg. fresh



### Choice Beef Striploin 0x1 Boneless

#141968 6/11 lb. fresh

### Choice Beef Short loin Cut End to End 20 oz. Porter, T Bone, Kansas City, Strip

#135718 10/20 oz. fresh



## Ribeyes

### Upper 2/3 Choice Angus 1881 Hereford Beef Export Ribeye Bone-in

#143501 2/19 lb. fresh



### Choice Beef Ribeye Lipon Boneless 112A

#143498 5/15 lb. fresh

### Choice Beef Cowboy Ribeye Split Bone

#135702 12/16-18 oz. fresh

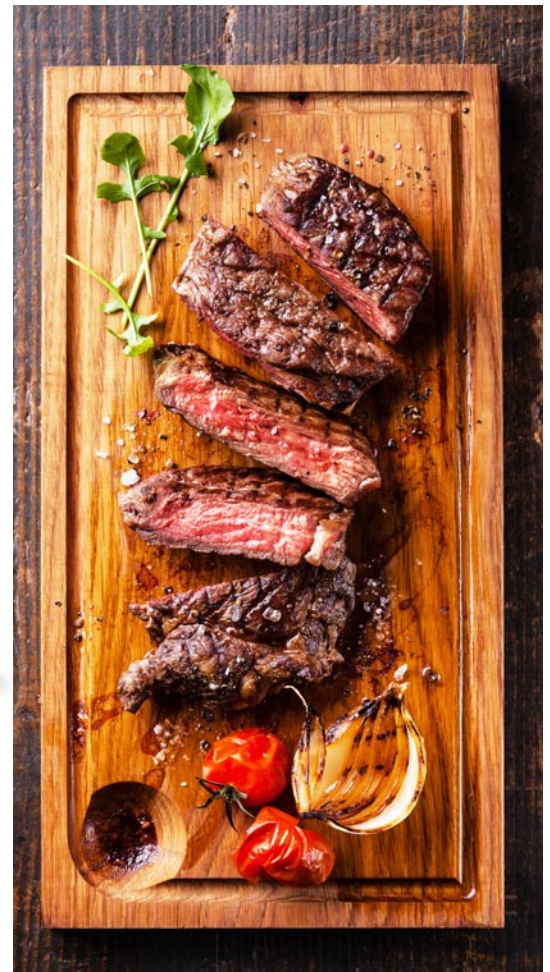


### Choice Beef Ribeye Steak 8-10 oz.

#135717 6/4 pk. frozen

### What is 1881 Omaha Hereford™ Beef?

- The top 2% from Greater Omaha Beef
- USDA Quality: Top Choice
- Hereford & Angus Black Baldy Beef
- Medium to fine marbling texture
- Exceptional quality and consistency
- A prime dining experience





## Rounds & Brisket

### **Select Beef Bottom Round Flat**

#143487 4/16 lb. fresh



### **Choice Beef Top Round Inside**

#143565 3/20 lb. avg. fresh

### **Choice Beef Whole Trimmed Top Round Netted**

#110613 1/23 lb. avg. fresh 1/4" trim

### **Choice Beef Eye Round Boneless**

#143545 12/6 lb. avg. fresh

### **Choice Beef Brisket**

#143689 5/15 lb. avg. fresh



## Flank, Short Rib & Skirt

### **Choice Beef Flank Steak**

#145206 6/13 lb. avg. fresh



### **Angus 1881 Hereford Beef Cleaned Flank Steak**

#145204 10/1.6 lb. avg. fresh

### **Beef Chuck Flap Meat Short Rib Boneless**

#140508 12/2 pc. fresh



### **Outside Skirt Peeled Cleaned Steak-Ready**

#141204 6/2 pc. fresh



### **Outside Skirt Steak Unpeeled**

#141830 16/4 lb. avg. fresh

## Teres Major

### **Select Chuck Teres Major Shoulder**

#141831 6/8 lb. fresh



## Culotte

### **Choice 1881 Hereford Beef Culotte Steak 1.75-2 lb.**

#141203 12/1 pc. frozen



## Ground Beef

### **Ground Beef 81/19 Fine Grind**

#140310 8/10 lb. fresh

#135045 8/10 lb. frozen



### **Ground Angus Beef 80/20**

#140312 6/10 lb. fresh

## Tripe

### **Beef Tripe Honeycomb**

#141931 1/15 lb. frozen



## Burgers

### **Angus Beef Chuck Homestyle Burger**

#141353 30/6 oz. fresh





**DiCarlo** FOOD SERVICE

P.O. BOX 2365 • 1630 N. OCEAN AVENUE • HOLTSVILLE • NY 11742  
 631-758-6000 • FOR SALES 1-800-DICARLO • dicarlofood.com

DEPOT CENTERS:  
 BELLMAWR, NJ    SOUTH KEARNY, NJ    WESTBOROUGH, MA



**DiCarlo Distributors is not responsible for any typographical errors.**